

VACUUM COLLECTING UNITS

6501743S30 MINIVAC 2

Vacuum suction for condensates only:

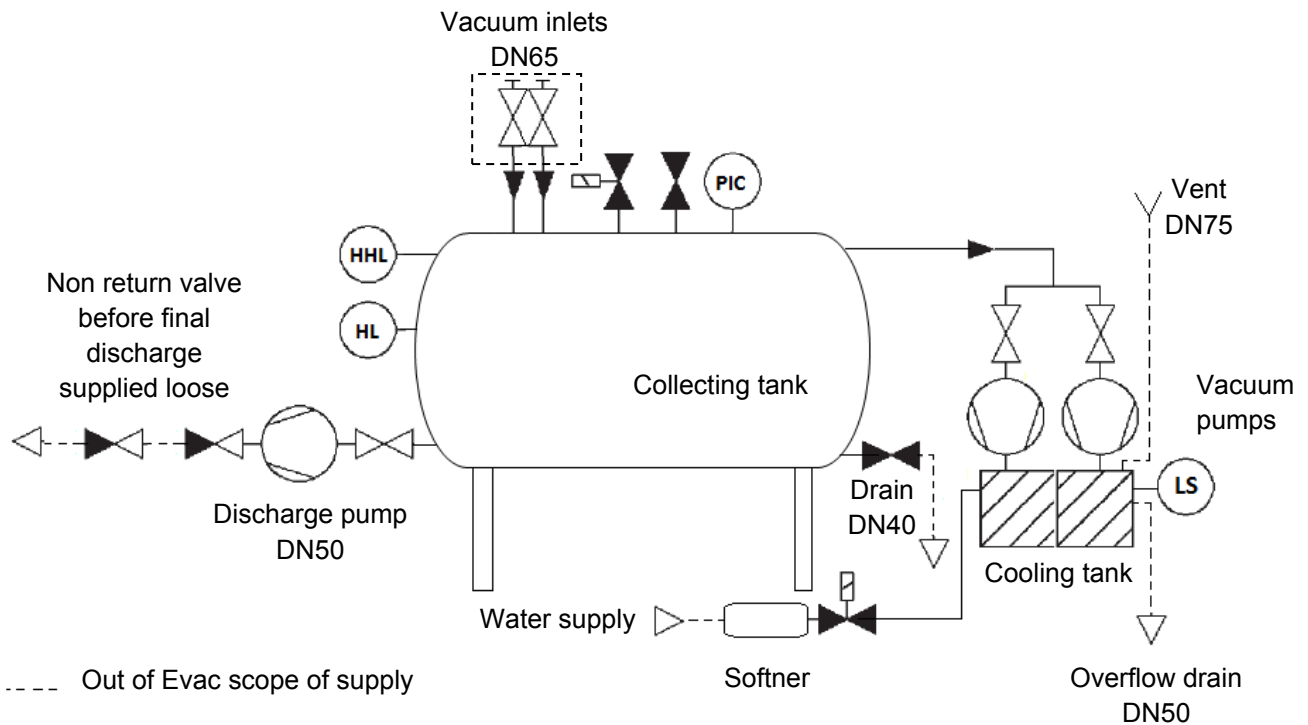
The vacuum system MiniVac N°2 is composed of:

- One 500 liters collecting tank.
- Two vacuum liquid ring pumps of 80 m³/h each
- One plastic water cooling tank.
- One discharge pump.
- One control panel with PLC for the power and the regulation.
- Two inlet connections for PVC DN65 (PN16) network pipes
- A coated frame mount with anti choc support on the ground.

Advantages

- Competitive price
- Small footprint
- Robust and simple

Flow diagram



VACUUM COLLECTING UNITS

6501743S30 MINIVAC 2

Functioning

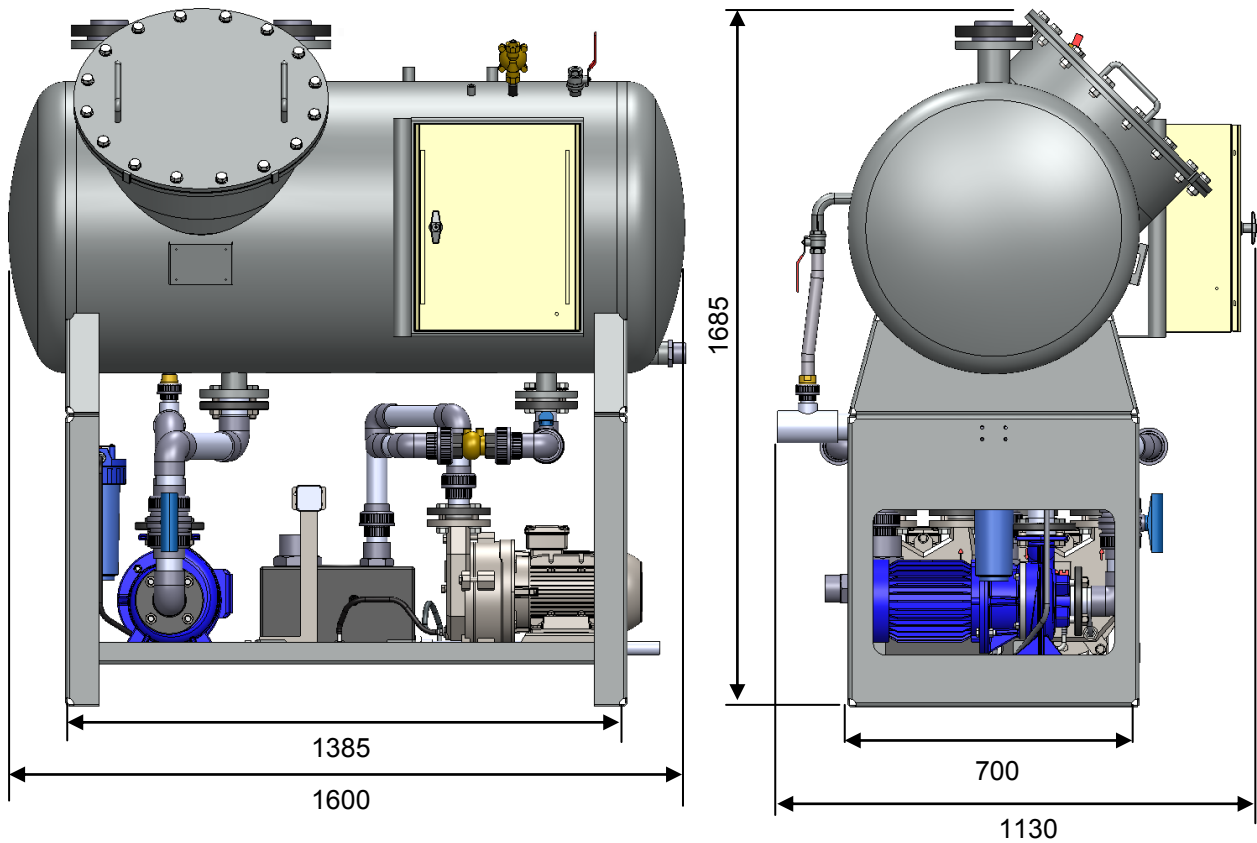
- The vacuum pumps are connected to the collecting tank and then to the pipe network. These pumps maintain a constant level of vacuum in the system.
- The vacuum electronic measurement system regulates the vacuum pumps operation.
- The collecting tank, equipped with level control, receives condensate water coming from the piping network (branch and main).
- Two DN65 inlets are located on the upper left part of the tank.
- When the vacuum pumps are running, vacuum is created in all the system.
- When needed the vacuum pumps are stopped, and the discharge pump is activated to discharge the tank to the sewage system through the DN50 PVC pipe.
- The control panel of the PLC manages the entire system.

Limit of use

The MiniVac N°2 system can handle up to 18 interfaces of 2.5 liters capacity. To connect more interfaces a vacuum plant type N°10 or N°30 will be recommended, please consult Evac.

VACUUM COLLECTING UNITS

6501743S30 MINIVAC 2

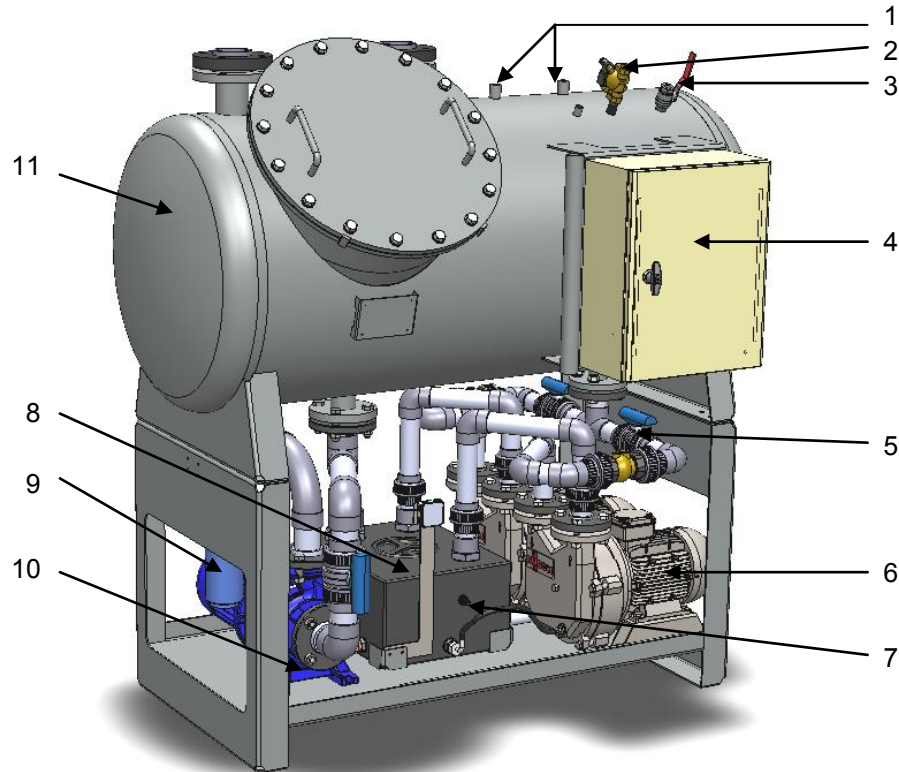


(dimensions in mm)

Materials	Vacuum pump; pump casing: cast iron, PTEF coated inside Frame and tank: Epoxy coated
Capacity	Tank volume: 500 L Vacuum capacity: 2 x 72 m ³ /h (50Hz)
Electrical data	Voltage: 415V/50Hz, 3 phases +earth Nominal current: 17.3 A; Nominal power: 7.4 kW
Connections	Inlet: DN65; Outlet (discharge): DN50 Vent: DN75
Shipping data	Dry weight: 580 kg tank and frame only

VACUUM COLLECTING UNITS

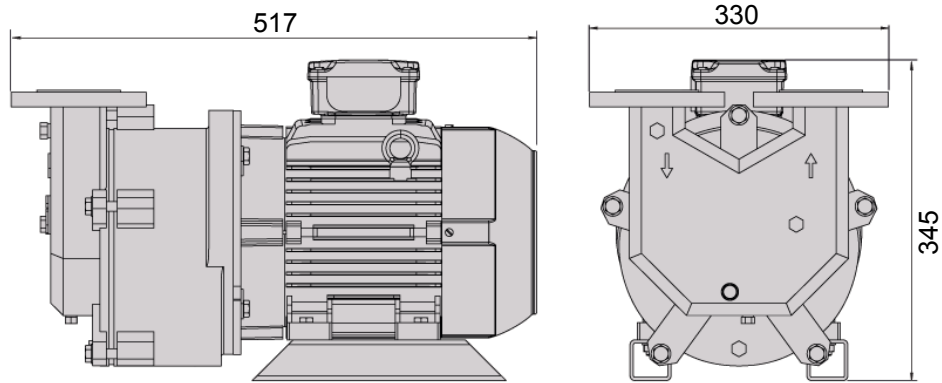
6501743S30 MINIVAC 2



Main components

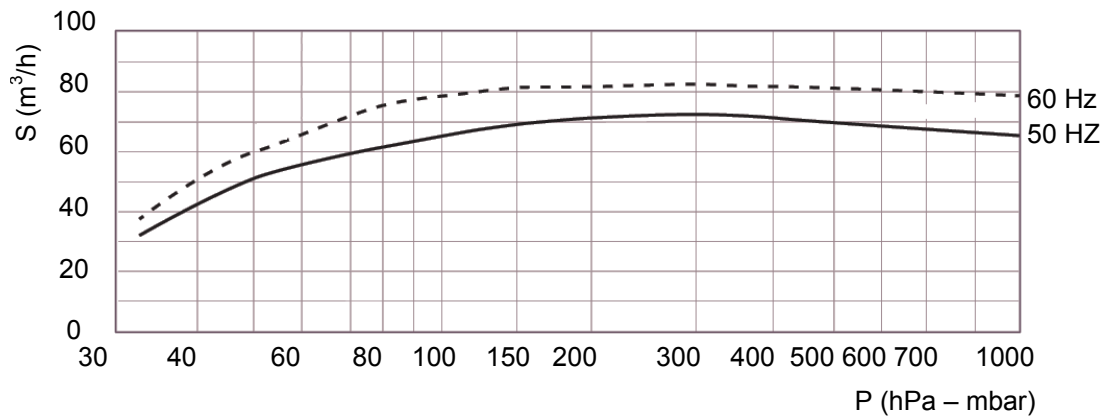
Item	Name	P/N	Quantity
1	Tank level switch	6500178	2
2	Solenoid air valve	6500339	1
3	Manual shut-off valve for vacuum break	6500297	1
4	Control panel MiniVac	6506104	1
5	Manual shut-off valve DN40	6500055	2
6	Liquid ring vacuum pump	6501729	2
7	Cooling tank level switch	6500751	1
8	Cooling tank	6500394	1
9	Water supply filter Cartridge filter	6501001 6501002	1 1
10	Discharge pump S30	6546910	1
11	MiniVac tank	6501742S30	1
	Flexible for cooling tank	6500371	2
	Flexible for water valve	6500051	1
	Solenoid water valve	6500339	1
	Manual ball valve DN50	6500056	1
	Non return-valve for discharge	6546452	1
	Non return-valve for discharge (supplied loose)	6500069	1
	Non return valve vacuum line	6501737	2

6501729 VACUUM PUMP



(dimensions in mm)

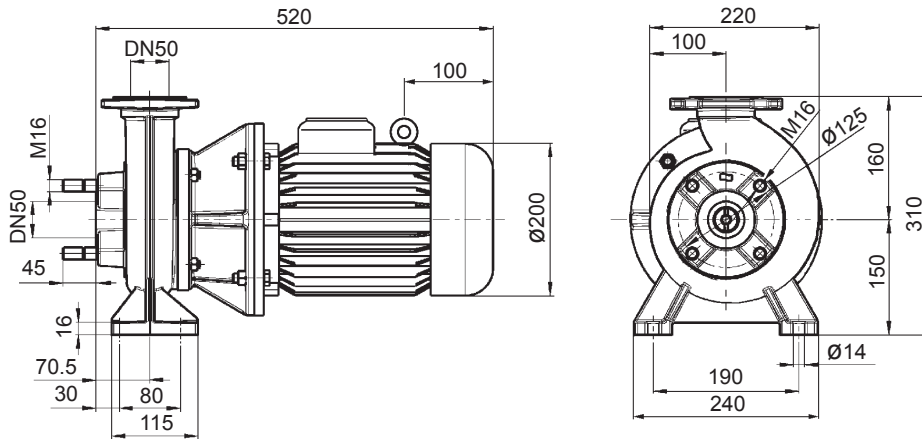
Capacity



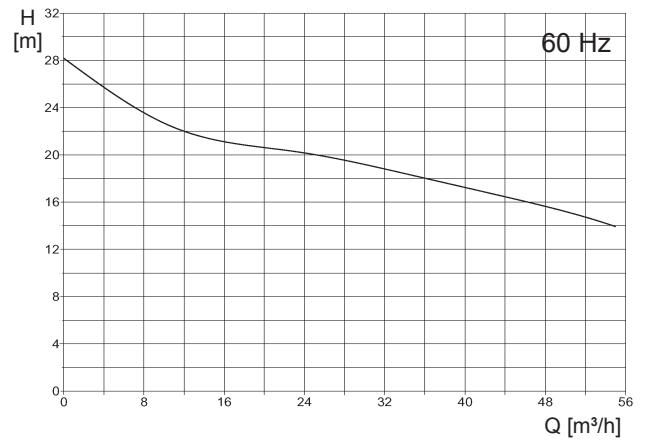
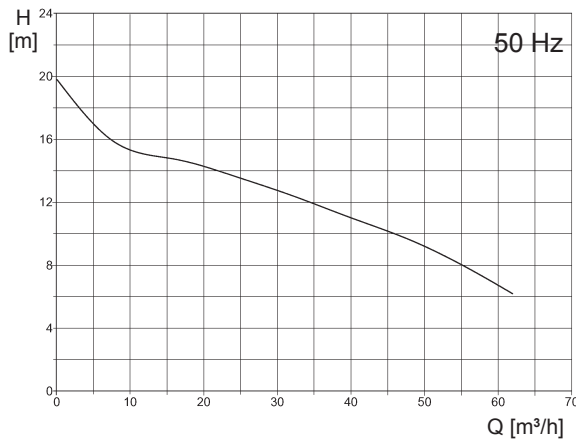
Air à 20 °C. Tolérance: ± 10% 50 Hz 60 Hz

Type	Liquid ring vacuum pump
Capacity	Nominal displacement: 50Hz: 72 m³/h; 60Hz: 83 m³/h
Materials	Housing: Cast iron housing; impeller: 316 stainless steel
Connections	Suction and discharge connection: DN40
Other	Sound level: 70dB(A) ISO 2151
Electrical data	Nominal motor rating: 50Hz: 2.2 KW; 60Hz:3.0 KW Motor speed: 50Hz: 1500 rpm; 60Hz:1800 rpm
Shipping data	Weight approx: 50Hz: 55 kg; 60Hz: 58 kg

6546910 PUMP S30, 3x380-420 V 50 Hz, 3x440-480 V 60 Hz, 3x660-690 V 50 Hz



Capacity



Electrical data

Voltage: 3x380-420 V 50 Hz			Voltage: 3x440-480 V 60 Hz			Voltage: 3x660-690 V 50 Hz		
Nominal		Motor speed	Nominal		Motor speed	Nominal		Motor speed
Power	Current		Power	Current		Power	Current	
3.0 kW	6.5 A	3000 rpm	3.6 kW	6.3 A	3600 rpm	3.0 kW	3.75 A	3000 rpm

Protection class: IP55
 Insulation class: F
 Efficiency: IE1

Materials

Pump casing and interstage casing: Cast iron EN-GJL-250 (GG25)
 Impeller: Cast iron EN-GJL-250 (GG25)
 Shaft: Stainless steel SIS 2350 (AISI316Ti)
 Impeller nut: Copper alloy UNS 38500
 Metal seals: Carbon stainless steel

Other

Impeller: Ø120

Shipping data

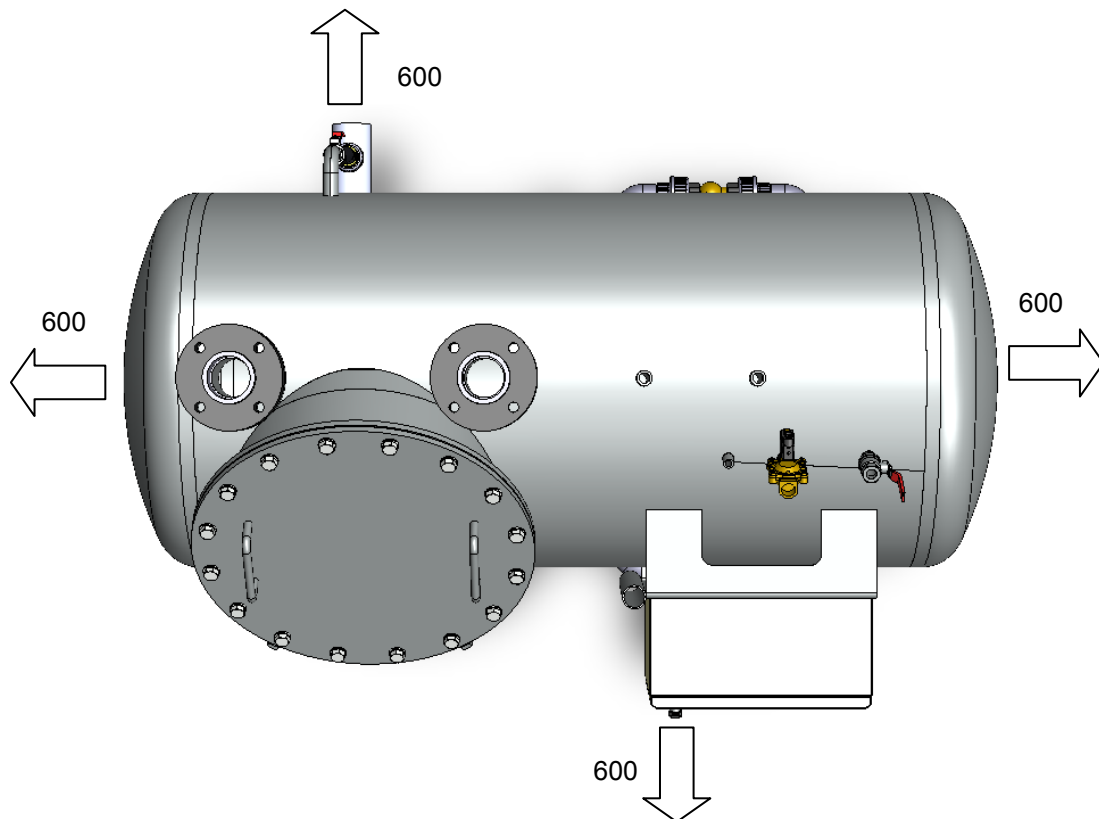
Net weight: 56 kg

VACUUM COLLECTING UNITS

6501743S30 MINIVAC 2

The installation of an Evac vacuum system requires:

- Area for equipment, providing space to the sides for maintenance and services, minimum plant room area approx 6.5 m²
- Water supply
- A gravity floor drain or an Evac vacuum interface unit for the cooling tank overflow
- Supply of electricity, 415V/50Hz, 3 phases + earth
- Vacuum piping arrival
- Gravity discharge line
- Ventilation of the cooling tank (DN75) to the atmosphere, outside of the plant room



(maintenance distances requirement in mm)